

NEWPORT NEWS

"Working Toward A Positive Future"

Published and Distributed by
Newport Property Owner's Association

SPRING CELEBRATION

Saturday, March 23, 2024
11 am - 2 pm
Pool Area

Easter Egg Hunt
(begins at 11:15 am)

Easter Bunny
(bring your camera)

Dance and play games
with our DJ

Face Painting

Free Hot Dogs
and Drinks
(11:30—1:30 or until gone)

QUARTERLY MEETING STONEBRIDGE

THURSDAY, APRIL 11th
7:00 P.M.

Review Annual Meeting Minutes
First Quarter Financial Review
President's Report

Drawing for two \$50 Visa gift cards.
(must be present to win)



COMMUNITY GARAGE SALE

April 13th
(rain date April 20th)

Signs may be placed throughout the
neighborhood.

Please remove your signs
by 4 p.m. on Saturday.





Mother's Day

BRUNCH

MAY **12** SUNDAY

11am-2pm

ADULTS **\$45** | CHILDREN (12 and under) **\$15** | UNDER 3 **FREE**

Mimosa's for Mom's

Stonebridge at Newport
Food by INJOY

RSVP BY APRIL 28th:

lexi@stonebridge-newport.com





BRUNCH MENU

Carving Station:
Prime Rib with Au Jus & Horseradish
Smoked Ham

Chicken & Waffles
Bacon
Soft Scrambled Eggs
Baked Mac & Cheese
Brown Sugar Bacon Green Beans
Fried Potatoes & Onions
Pastry Assortment
Yogurt Parfait with Granola and Fruit
Dessert Table Assortment
Salad



2024 ASSESSMENTS REMAIN THE SAME

\$55 PER MONTH

ASSESSMENTS ARE DUE ON THE FIRST OF EACH MONTH

Assessments received after the last day of the month in which they are due, are subject to a monthly late fee of \$5.00 plus interest at the rate of 6% per annum. Payments more than four months late, are subject to an additional collection fee of \$15.00 per month.

For complete collection procedures, please visit our website at www.newportpoa.com

Resident Documents ... Collection Procedures

HOW TO PAY:

- Online – newportpoa.com – hot pink button
- In Person at the NPOA office – card, check, cash (exact amount—no cash retained in office for making change)
- Through your bank
- Direct Debit (form available in the office)
- Blue Drop Box on the right hand side of the NPOA office

ARCHITECTURAL CONTROL

All improvements to the exterior of your home are subject to Architectural Review. Please make sure to submit a Home Improvement Request Form for all exterior improvements, including without limitation:



- Painting (color paint chip must be submitted)
- Roofing (must have at least 25 year shingle)
- Fences (new or replacement in whole or part – must include plot plan showing location of fence)
- Driveway (must include plot plan showing location of driveway and materials being used)
- Sheds – please consult Architectural Control Guidelines

If you have any questions regarding what is required to make exterior alterations to your home, please contact Dina at dina@newportpoa.com or call (281) 462-4199, Ext. 14.

For a copy of ACC Guidelines, please go to our website www.newportpoa.com, click on Documents, go to Resident Documents and scroll down to ACC Guidelines.

The HIR Form is available in the Management Office and online.

VACATION WATCH PROGRAM

A Vacation Watch is a service provided by the Harris County Sheriff's Office for citizens residing in the unincorporated areas of Harris County.

Citizens may request a Vacation Watch by going to the following link and completing the online form.

<https://constable3.harriscountytexas.gov/Pages/VacationWatch.aspx>

The NPOA staff attempts to answer each call as it comes in, however, if we are on another line or helping another resident at the front desk, we kindly ask that you leave your name, number and a brief message. We cannot return your call if we do not have your



DAYLIGHT SAVINGS TIME

**Begins at 2 a.m.
Sunday, March 10th**

**Ends at 2 a.m.
Sunday, November 3rd**



Fur Babies
Dog Wash & Grooming

1303 Kingwood Drive
Kingwood, TX 77339

281-713-8900

rescuenana2@gmail.com

<http://www.furbabieskingwood.com>

Susie Compian

REALTOR®

The Bunyan Team

713-419-4869

smcompian@hotmail.com

www.BeatriceBunyan.com



NPOA Blue Drop Box Location

The NPOA Blue Drop Box for monthly assessments and/or forms is located to the right hand side of the NPOA Management Office.

COMMUNITY ROOM RENTAL

\$150 for 4-hour rental either 8 to Noon OR 1 to 5 (*includes time to set up & break down*)

Nine 8' rectangular tabs

Three 5' rectangular serving tables

50 chairs

Fridge and Sink available

Room Dimensions: Width 34' x Length 43' with 9' ceiling

\$100 cleaning/damage deposit (NO GLITTER. NO CONFETTI. NO ALCOHOL.)

To book the Community Room or to request more information, please contact Pam in the NPOA Management Office at 281-462-4199, Ext. 10.

ON-STREET PARKING

We are getting reports of on-street parking from your neighbors. Parking in your driveway and garage is not only less disruptive to your neighbors, but it creates a safe neighborhood and helps prevent car thefts.

Here are a few parking tips to live by:



- Use your driveway and garage.
- Do not block mailboxes. If mailbox is blocked, the U.S. Postal Service will NOT DELIVER MAIL.
- Be sure to park in a way that you are not blocking sight or traffic. Park in front of your own home and have your guests do the same. Please do not punish your neighbors by blocking their home and spaces for their visitor parking.
- Be sure the vehicle you are parking on the street is a regular day-to-day use vehicle. It must move on a daily basis like going to and from work or school.



**PLEASE BE A COURTEOUS NEIGHBOR.
IF YOU CAN, PARK IN THE GARAGE
OR IN THE DRIVEWAY.**



NEWPORT'S AMENITIES

Our community has many amenities available to its residents:

Fitness Center, Swimming Pool and Tennis Courts

Walking Trails along Gum Gulley

Park with Splash Pad located on Port O'Call

Pocket Parks on South Diamondhead and Flying Bridge

(Walking Trails and Parks are operated by Newport MUD)



Access to Lake Houston
Boat dock available at lake and river areas
(boat launch permits required)
Picnic areas
Camping permitted at River



Stables with riding arena

Boat and RV Storage

20, 30 and 40 foot covered storage

(for prices contact the management office at 281.462.4199, Ext. 12)

FRONTIER WASTE SOLUTIONS

SERVICE DAYS

MONDAY/THURSDAY for the SOUTHSIDE of the San Jacinto River Authority Canal

TUESDAY/FRIDAY for the NORTHSIDE of the San Jacinto River Authority Canal

Please have your household waste to the curb by 7 am to ensure service that day.

YARD WASTE DAYS

FIRST COLLECTION DAYS OF THE WEEK (MONDAY/TUESDAY)

- Trees, shrubs, brush trimming and fencing (no greater than 4 feet long, no branches exceeding 4 inches in diameter, bundled and tied in bunches of no more than 50 pounds)
- Yard Waste (grass clippings, leaves, weeds, etc.) must be in bags or trash cans not exceeding 50 pounds a piece

HEAVY TRASH DAYS

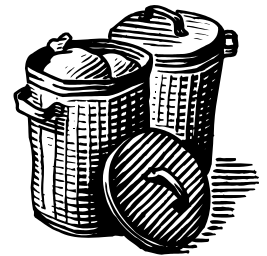
SECOND COLLECTION OF THE WEEK (THURSDAY/FRIDAY)

Heavy trash are items that fall under the categories of "furniture and/or appliances".

HEAVY TRASH IS NOT:

- Construction and demolition waste
- Concrete, wood, brick storm debris
- Home improvement projects, roofing material
- Unbundled branches

PLEASE STORE TRASH CANS OUT OF PUBLIC
VIEW except on trash days



Email: NewportMUD@frontierwaste.com

Website: www.frontierwaste.com

936-258-9035

GABBY'S

TREE SERVICE LLC

(832) 731-6338



COMING SOON PRE-REGISTER
CARE4KIDSACADEMY.COM



346-402-8758

17411 FM 2100

INFANTS
TO
12 YEAR OLDS

TIME TO RENEW YOUR AMENITY CARD

(Pool ... Fitness Center ... Lake & River ... Resident Golf Rates)

The Amenity Card is your pool pass and I.D. to use all amenities in Newport. Your Amenity Card will list everyone living in your household. You may also list on the card the name(s) of caregiver(s) watching over your children during the summer who will be taking them to the pool or one of our other amenities.

There is an annual (January 1st through December 31st) \$30 fee per household for the Amenity Card. One Amenity Card may be shared by the entire household or you may elect to purchase an additional Amenity Card for \$10. No more than two (2) cards per household.

If you have a boat, there is an additional annual \$30 launch fee.

To access the fitness center, there is a one-time activation fee of \$20 to purchase the key fob.

To obtain an Amenity Card, you will need to complete a Usage and Indemnification Agreement. This Agreement may be found on our website newportpoa.com under Resident Documents or you may stop by the management office. The management office will be open the following days to accommodate residents who are unable to come in during normal business hours:

Tuesday, March 12, 19, 26 until 7 pm
Saturday, March 9—9 am to 2 pm
Tuesday, April 2, 9, 16, and 23 until 7 pm
Saturday, April 20—9 am to 2 pm

You may also complete the form and place it in our drop box along with your check in the amount of \$30.

For additional information, please contact Maria at 281-462-4199, Ext. 17.

LARGE YARD TREE DEBRIS PICK UP

Spring is just around the corner and we will all be cleaning up from winter.

Large yard tree debris pick up begins **MONDAY, MAY 6th.**

We will pick up large limbs and trees that have been cut and placed at the curb.

Dead trees may be removed without consent of the Architectural Control Committee.

You will need ACC approval to remove any live trees from your property.

To schedule your pick up, please contact the management office at (281) 462-4199, Ext. 10.

ON OR BEFORE MAY 3rd.

We will not pick up anything other than tree debris.



Creative Corner Child Development Center

- o Outstanding Infant and Toddler Program
- o Preschool and Pre-K
- o ***WE OFFER A HIGHLY ADVANCED CURRICULUM***
- o Exciting after school program
- o Fun and exciting summer program with Academic Enrichment to keep students prepared for the school year

YOU'VE TRIED THE REST, NOW COME SEE THE BEST!

Contact us to schedule a tour:

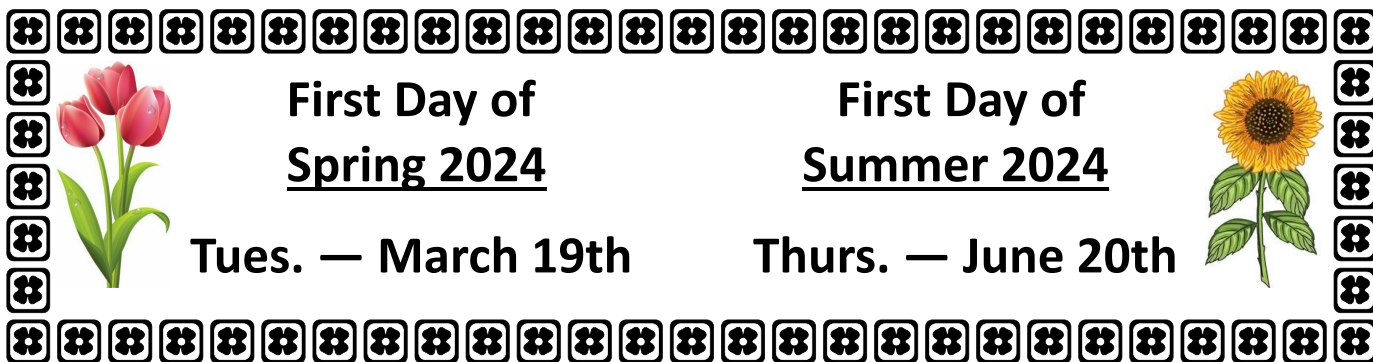
HOURS: 6:30 am—6:30 pm

PH: 281-462-7403 Email: ccnewport@gmail.com

119 S. Diamondhead Blvd. Crosby, TX

Tour our website for more details: www.CreativeCornerNewport.net

Tour our website for more details: www.CreativeCornerNewport.net



SPRING IS JUST AROUND THE CORNER

Spring is just around the corner and it's time to clean up from the havoc this winter threw on us.

We will begin writing deed restriction violations for landscape beds beginning March 18, 2024. If you get a letter and cannot correct the violation within ten (10) days, please call Carolina in our office at (281) 462-4199, Ext. 15 or Yanet (281) 462-4199, Ext. 16 to get an extension and discuss the matter further.

HOW TO REPORT A STREET LIGHT OUTAGE

Every street light in the community has an address and a five or six digit I.D. code on the pole (about eye level).

Write down the address and I.D. number and go to www.centerpointenergy.com/outage to file a report.

If you do not have access to the internet, please call 713-207-2222.

N P O A S T A F F 281-462-4199

Pam, Ext. 10—Customer Service, Community Room
pam@newportpoa.com

Carol, Ext. 11, Collections and Compliance
cjones@newportpoa.com

Cindy, Ext. 12—Admin Asst, Stables, Storage
cmoffitt@newportpoa.com

Teresa, Ext. 13—COMMUNITY MANAGER
tplatt@newportpoa.com

Dina, Ext. 14—ACC, dina@newportpoa.com

Carolina, Ext. 15—Deed Restriction Auditor
carolina@newportpoa.com, Se Habla Español

Maria, Ext. 17—Amenity Cards
marenas@newportpoa.com, Se Habla Español

Heather, Ext. 18—Accounting
heather@newportpoa.com

FREQUENTLY ASKED QUESTIONS:

1. **How can we stop people from Parking on Street?:** Although there are laws against leaving abandoned or unused vehicles along the street, parking along a roadway is not prohibited (except where specifically prohibited, for example: on a highway, in front of a fire hydrant or a driveway). However, we do recognize that this can be a nuisance. Therefore, the Newport Architectural Control Committee will approve widening driveways to an additional car width when it can be accomplished within the other rules and constraints of our community restrictions so as to allow for an extra car off the street.

2. **Can't the Association do more about Loose Dogs?:** Loose dogs are a challenge for many communities mainly because it is unsafe for a resident (or employees of the association) to approach a loose dog on his/her own and within minutes of law enforcement being called, the animal has slipped away. The best course of action is for each resident to make sure their animals are secure and when strays are spotted to call Harris County Animal Control at 281 -999-3191.

3. **My Neighbor's Dog Barks All day and All Night. What Can I Do?** Speak directly with your neighbor, follow up with a letter (along with a certified letter), contact the Constable non-emergency 281-427-4791, and lastly, contact Harris County Animal Control 281-999-3191.

**SUBMIT YOUR QUESTIONS ONLINE VIA OUR WEBSITE AT NEWPORTPOA.COM
UNDER CONTACT, COMPLETE THE CONTACT US FORM.**

DATES TO REMEMBER

March 6
Office Closed
[In-Service Work Day]

March 29
Office Closed
[Good Friday Holiday]

April 3
Office Closed
[In-Service Work Day]

April 6
Spring Celebration
[11:00 to 2:00]

April 11
Quarterly Meeting
Stonebridge

April 13
Community
Garage Sale

KNOW YOUR MARKER FLAGS

Texas811.org

White—Proposed excavation

Pink—Temporary survey markings

Red—Electric power lines, cables,
conduit and lighting cables

Yellow—Gas, oil, steam, petroleum
or gaseous materials

Orange—Communication, alarm or
signal lines, cables or conduit

Blue—Potable water

Purple—Reclaimed water, irrigation
and slurry lines

Green—Sewer and drain lines

B
E

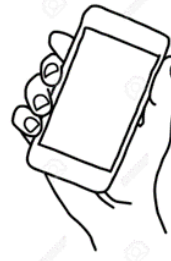
A
L
E
R
T

R
E
P
O
R
T

A
N
Y
T
H
I
N
G

S
U
S
P
I
C
I
O
U
S

281-
427-4791



IMPORTANT NUMBERS

NPOA WEBSITE

www.newportpoa.com

Community Manager - Teresa Platt
(281) 462-4199 Ext. 13
tplatt@newportpoa.com

Constable (non emergency)	Emergency 911 281-427-4791
------------------------------	-------------------------------

Crosby Volunteer Fire Dept. (non emergency/information)	Emergency 911 281-328-2300
--	-------------------------------

Crosby EMS (non-emergency information)	Emergency 911 281-328-6810
---	-------------------------------

Crosby Post Office	281-462-8429
Crosby/Huffman Chamber	281-328-6984
Harris County Animal Control	281-999-3191

Harris County PCT 3 (trees in road; dead animals in road; missing stop signs)	713-274-3100
--	--------------

Newport MUD	281-324-9803
Harris County Pollution Control	713-920-2831
Harris County Attorney	713-755-5101

Health Department – (Environmental)	713-439-6016
Center Point Customer Service	713-207-2222
Commissioner Tom Ramsey - Pct. 3	281-463-6300

Frontier Waste Solutions	936-258-9035
Crosby Community Center	281-462-0543
Senior Adult Program	281-893-3726
Sweetwater Pools	281-988-8480

Stonebridge at Newport Golf Club	281-328-3576
----------------------------------	--------------

Environmental Division of Public Health 713-439-6270
(To Report Abandoned Houses to Harris County)